

MAIORA

M|36













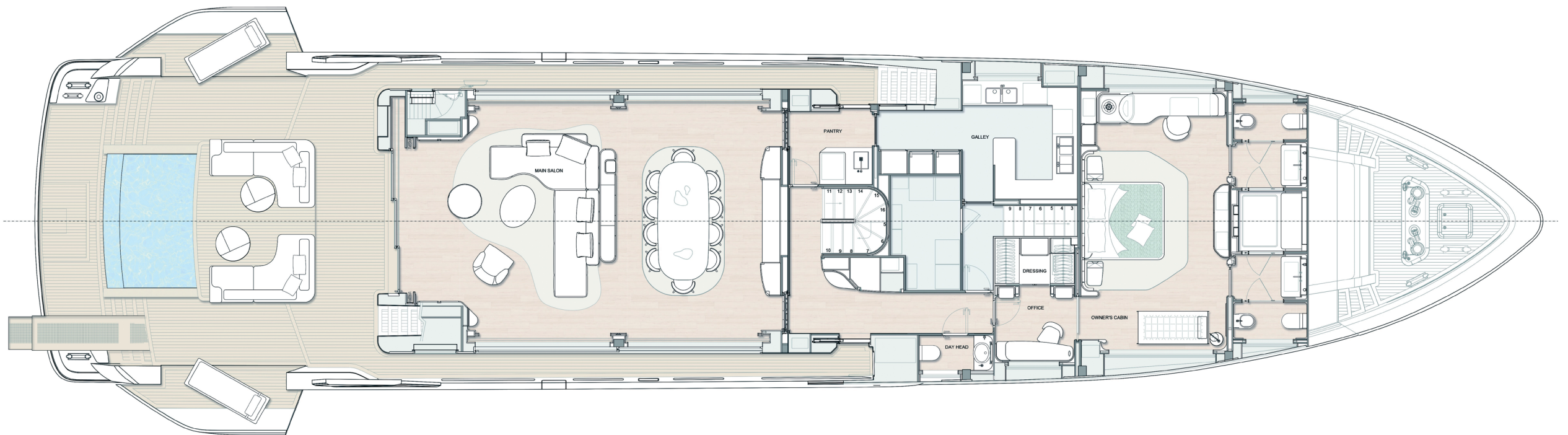












MAIN DECK



































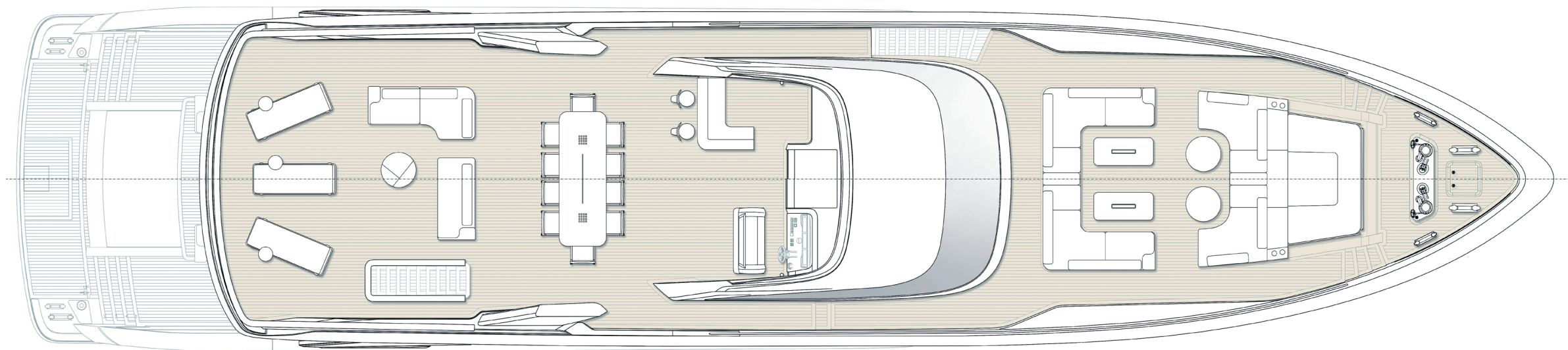












UPPER DECK



















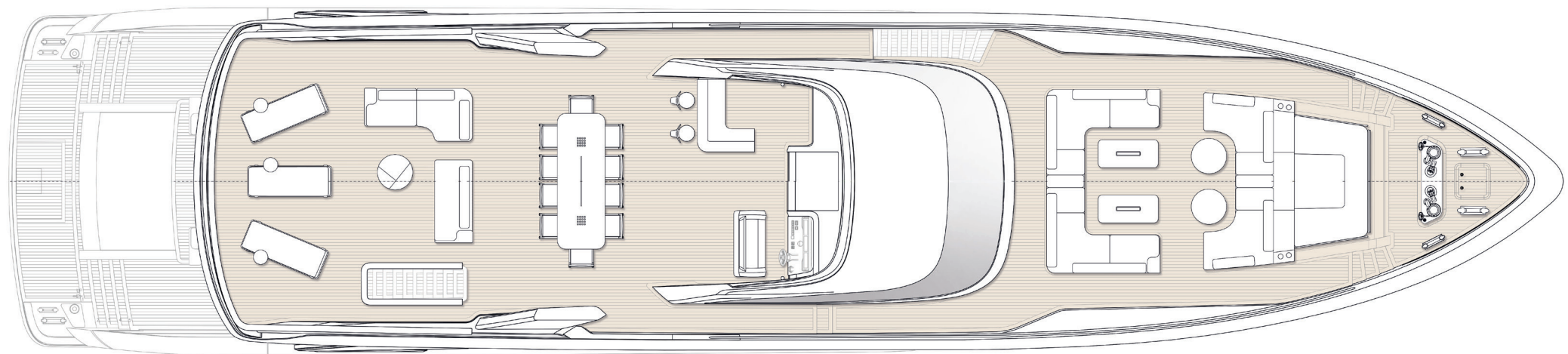




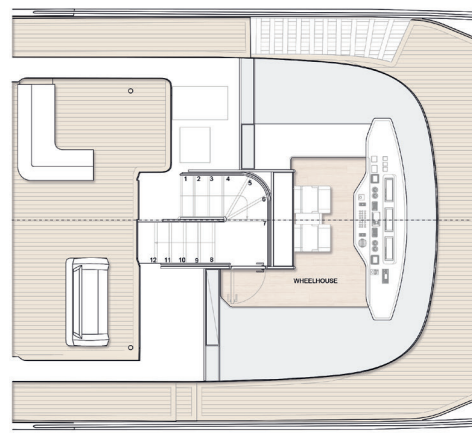




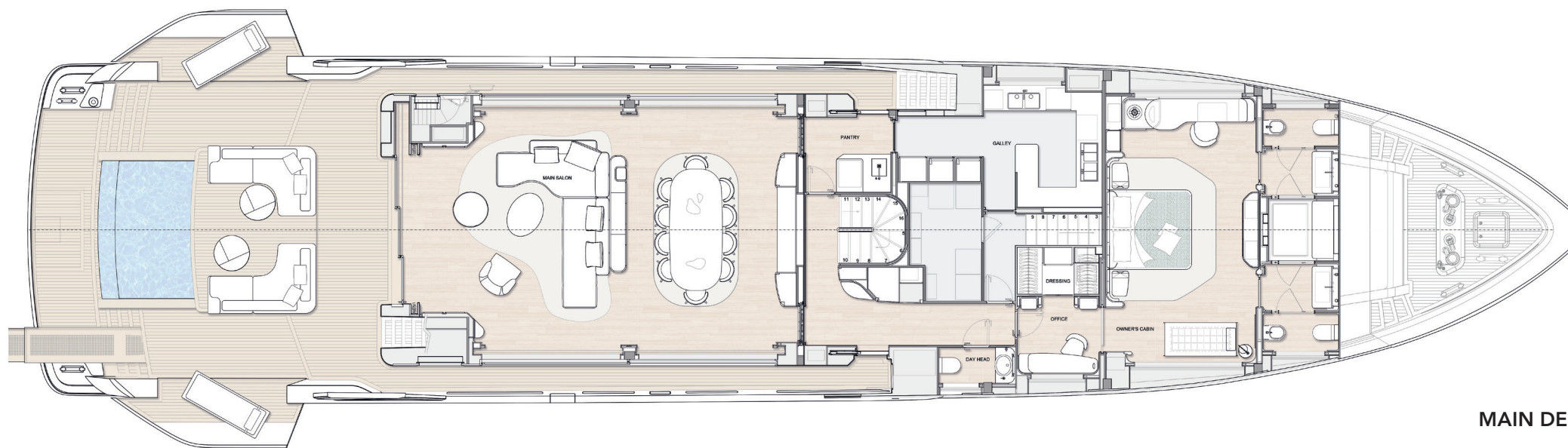
PROFILE



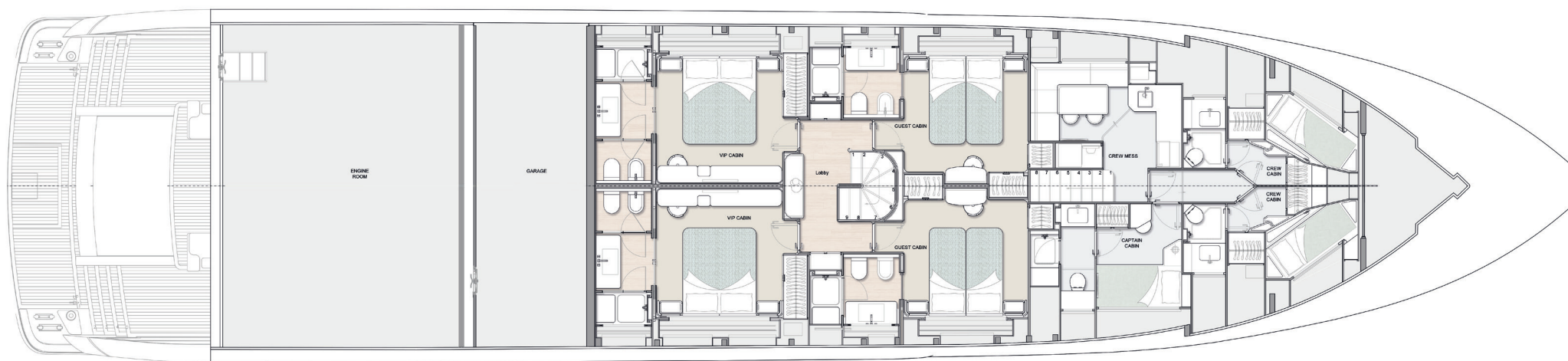
UPPER DECK



RAISED PILOT HOUSE



MAIN DECK



LOWER DECK

M|36

MAIN FEATURES

Hull	COMPOSITE
Superstructure	COMPOSITE

DIMENSIONS

Length Overall	37,00 m / 122'
Max Beam	8,20 m / 27'
Draught	2,35 m / 4'9"
Gross Tonnage	275 gt

TANK CAPACITY

Fuel Capacity	20.000 l / 5.283 US gal
Water Capacity	3.000 l / 792 US gal

PROPULSION

Main engine power option A	[2] MAN V12-2200 OF 2200 HP EACH
Main engine power option B	[2] MTU 16V2000 M96L OF 2600 HP EACH
Transmission	[2] DETRA 4-blade Nibral Classe S

PERFORMANCE

Max speed option A	24 knots
Max speed option B	30 knots

ACCOMMODATION

Guests	Up to 12 in 5 cabins
Crew	5 in 3 cabins

DESIGN

Exterior Designer	Quartostile
Interior Décor Designer	Acube Design

CLASSIFICATION

RINA – C ⌘ HULL • MACH Y - Unrestricted Navigation (Pleasure Yacht)

This brochure does not, under any circumstances, constitute an offer by the shipyard to any person, nor does it form part of any contract. All information contained herein, including but not limited to technical data, performance details, illustrations, and drawings, is provided as a general guide only. It is not contractual and refers to standard models of motor yachts built by the shipyard, based on updates available at the time of publication. Images, diagrams, designs, and examples included are intended solely to illustrate the provided information. The only binding information for the seller is exclusively contained in the sale agreement and the relevant specific manual. The information in this brochure may not reflect all details, technical or commercial changes made after publication, or anticipate every possible scenario. Given the unique characteristics of each yacht, the shipyard disclaims any liability for reliance on the information contained in this brochure.