

MAIORA

42 Exuma

The Rinascimento of Living at Sea

Maiora 42 Exuma is where spaces
with soul are created for you to come home.

Born from the firsthand experience of those
who inhabit life of the sea and shaped by two masters of design,

Giorgio Maria Cassetta for the exterior lines and ELIE SAAB for the interiors,

the 42 Exuma breaks away from outdated conventions to create a radically new onboard
experience reimagining
yacht living with effortless elegance.

Cassetta Yacht Designers

Cassetta Yacht Designers is an award-winning superyacht design firm, widely recognized for distinctive exterior and interior yacht designs. The company is nearing its 10-year anniversary and today employs 15 experts from various disciplines, covering every aspect of the yacht design process from preliminary studies, architecture, advanced 3D modeling to engineering and naval architecture solutions. The firm prides itself on being at the very forefront of computer technology, using the most advanced design and engineering solutions available. With an impressive portfolio of more than 60 yachts designed and built, ranging from 20m to 108m, Giorgio M. Cassetta has gained the respect and admiration of the industry and yacht enthusiasts worldwide.



Holder of numerous design awards, Giorgio M. Cassetta's creations are renowned for their smooth lines, harmonious designs, attention to detail, and clever engineering. The studio has been recognized by some of the industry's most notorious clients for its technical expertise, perfection in design and absolute confidentiality.

The solid experience of actually seeing a vast number of projects from Initial sketches all the way through to sea trials and delivery has established Giorgio M. Cassetta's solid presence in today's yacht design landscape and made him a force to reckon with.

ELIE SAAB

Elie Saab is known for his captivating aesthetic and inspired sense of fashion, using intricate craftsmanship and sophisticated design to create glamorous silhouettes that exude bold style and a timeless feminine appeal.

The first non-Italian designer invited to the Camera Nazionale della Moda in Rome in 1997, he chose Milan to launch his ready-to-wear line the following year.

Elie Saab's fate in the fashion industry was sealed in Paris when admitted to the prestigious Chambre Syndical in 2003, and where he debuted his first ready-to-wear runway show in 2005.



Sought out by celebrities, royalty, and public figures alike, Elie Saab is one of the most significant global designers at the forefront of fashion. With ateliers and boutiques throughout the world, his fashion universe continues to grow into a leading luxury lifestyle brand, offering diversified lines, from ready-to-wear and bridal, to accessories, eyewear, children's wear, watches and fragrances. He recently established MAISON (2019), which offers signature furniture collections and exclusive interiors for global real-estate ventures.







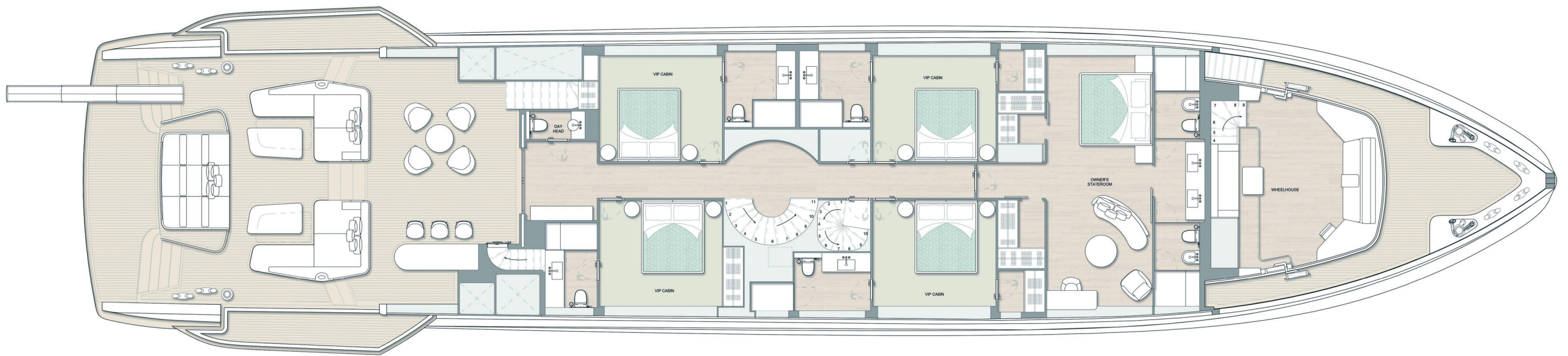












MAIN DECK







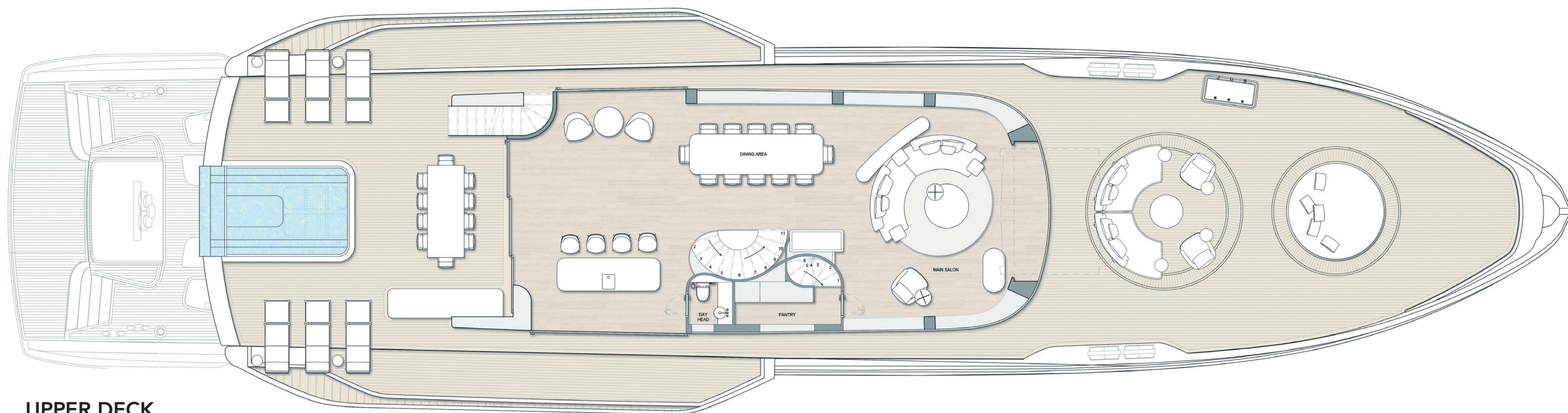












UPPER DECK





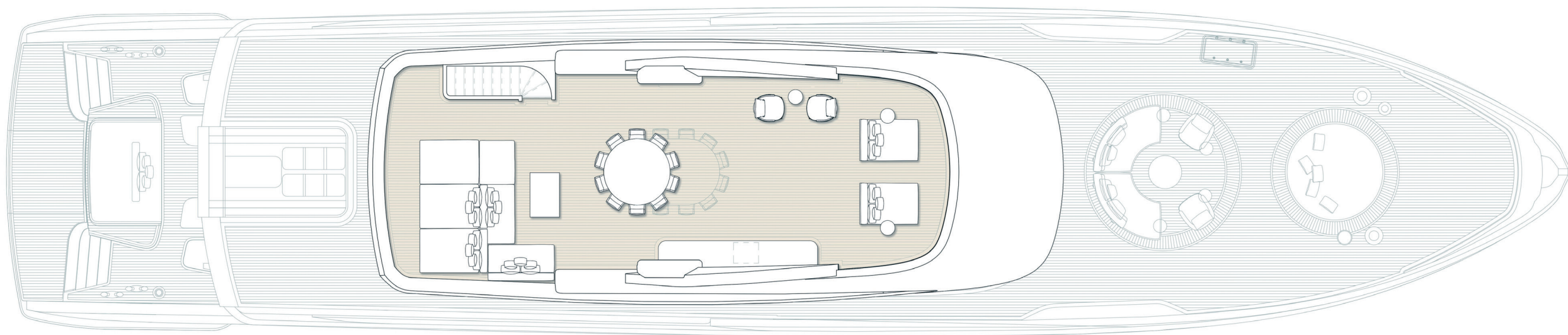












SUNDECK







42 Exuma

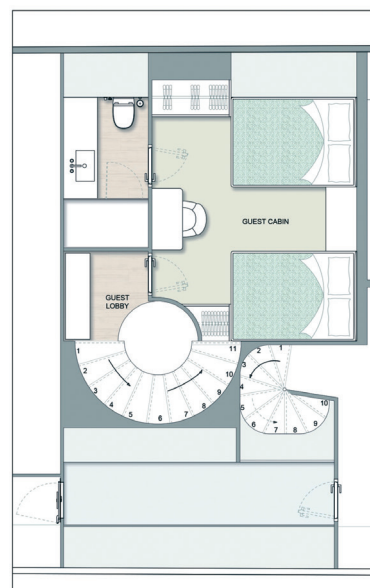








LOWER DECK



TECHNICAL DATA

CONSTRUCTION

Hull	Composite
Superstructure	Composite

PROPULSION

Main Engines OPT A	[4] VOLVO PENTA 1000 HP EACH
Transmission OPT A	[2] IPS40 2000 HP/EA.IPS
Stabilizer OPT A	Fins Stabilizers
Main Engines OPT B	[3] MTU 16V2000M96L of 2600 HP EACH
Transmission OPT B	[2] MJP STEERABLE WATERJETS [1] MJP CENTRAL BOOSTER
Stabilizer OPT B	[3] Seakeeper mod. 40

DIMENSIONS

Length Overall	42,49 m / 139' 5"
Max Beam	8,90 m / 29' 2"
Draught	1,55 m / 5' 1"
Gross Tonnage	430 gt

PERFORMANCE

Max Speed OPT A	Up to 20 knots
Max Speed OPT B	Up to 30 knots

TANK CAPACITY

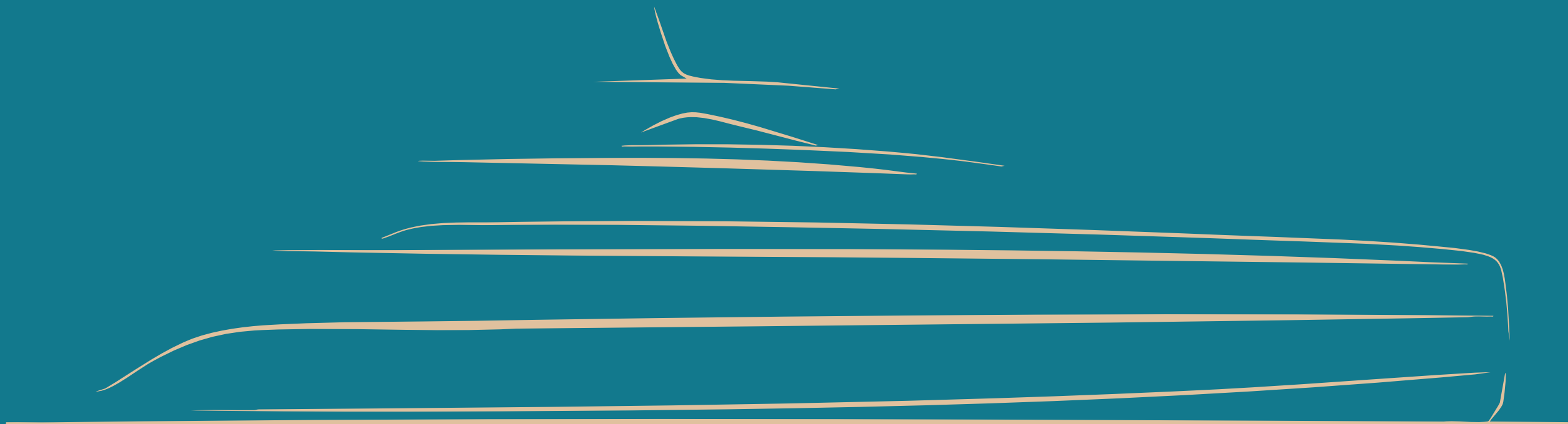
Fuel Capacity	34.000 l / 8.981 US gal
Water Capacity	4.500 l / 1.189 US gal

ACCOMMODATION

Guests	Up to 12 in 6 cabins
Crew	9 in 5 cabins

DESIGN

Exterior Design	Cassetta Yacht Designers
Interior Décor Designer	ELIE SAAB Maison



Maiores 42 Exuma is more than a yacht, a sanctuary sculpted for your soul.
A Rinascimento where proportion supports presence and space honours the human being.

This brochure does not, under any circumstances, constitute an offer by the shipyard to any person, nor does it form part of any contract. All information contained herein, including but not limited to technical data, performance details, illustrations, and drawings, is provided as a general guide only. It is not contractual and refers to standard models of motor yachts built by the shipyard, based on updates available at the time of publication. Images, diagrams, designs, and examples included are intended solely to illustrate the provided information. The only binding information for the seller is exclusively contained in the sale agreement and the relevant specific manual. The information in this brochure may not reflect all details, technical or commercial changes made after publication, or anticipate every possible scenario. Given the unique characteristics of each yacht, the shipyard disclaims any liability for reliance on the information contained in this brochure.